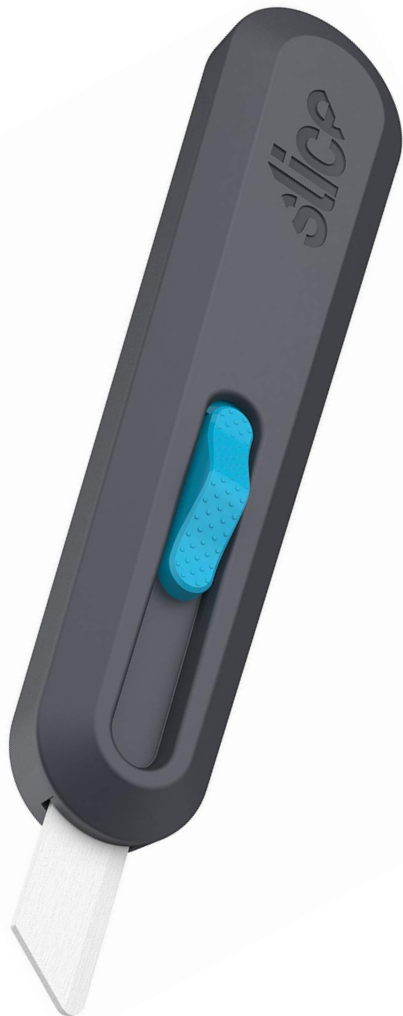


SLICE SMART UTILITY KNIFE

Order Code: SLICE-SMART RETRACT



The Slice Smart-Retract Utility Knife combines a Slice ceramic blade with the next advance in safety features: smart retract technology. The Smart-retract feature ensures that the blade retracts as soon as it loses contact with your cutting material, even if you forget to release the blade slider. This protects against slipping accidents because the blade is exposed only when it's doing its job.

Constructed with a durable glass-filled nylon handle and a 24 millimeter blade, the Smart-Retract Utility Knife handles tough jobs like triple-walled corrugated cardboard. The Smart-Retract Utility Knife is ambidextrous and includes an ergo-pull side slider button. The ergo-pull design was tested by United States Ergonomics and found to require less forearm and hand muscle effort than traditional push-blade steel utility knives.

Features:

- Easy no-tool blade change
- Ergo-pull slider button lowers muscle effort
- Safer than metal blades
- Durable glass filled nylon (GFN) handle
- Ambidextrous use
- Lanyard hole for easy transport
- Blade is chemically inert, never rusts
- Non-conductive, non-magnetic blades

Suitable applications:

Cardboard

Plastic film

Clamshell packaging

Bubble wrap

Tape

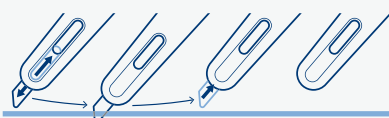
Bag and sacks

Paper bags

Pallet coverings



Longer blade for thicker cuts



Smart-retracts for safety

Why a Ceramic Blade?

- Non-conductive, non-magnetic
- Safe + Clean made from 100% Zirconium Oxide, never rusts
- Patented thicker design easier to hold and handle
- Sharp up to 11x longer than steel
- Less blade changes
- A safer cutting experience
- Rounded edges are safer to handle and use



SLICE-UCBL-PNT 1.3mm
Code: 10528



SLICE-UCBL-RND 1.3mm
Code: 10526